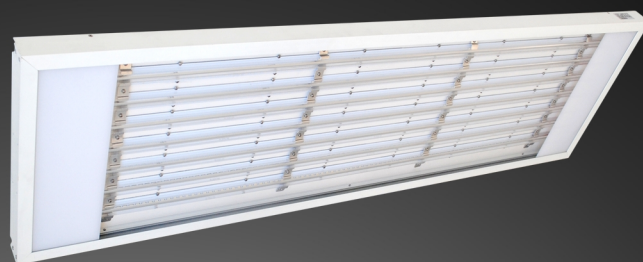


### LED Commercial Lighting LX Linear

Magnolux LED Commercial Lighting of LX Linear Series with excellent luminance are the most efficient and environmentally friendly alternative (e.g.) to traditional gas station lights.



## LED Commercial Lighting LX - Linear 200

### HIGHLIGHTS

- » high energy efficiency
- » lifetime up to 50.000 hours
- » motion sensor, daylight sensor and dimming (PWM 1-10V) optional

### APPLICATION AREA

Warehouses, Production Halls, Workshops, Animal Barns, Sports Halls, etc.



# SPECIFICATIONS

|                         |  |
|-------------------------|--|
| <b>Artikel Number</b>   | <b>101270</b>                                |
| <b>Product Name</b>     | <b>LED Commercial Lighting LX Linear 200</b> |
| <b>Model</b>            |  |
| Lumen Output            | 20450 Lumen                                  |
| LED Power               | 200 Watt                                     |
| Power Consumption       | 237 Watt                                     |
| Input Voltage/Hertz     | 90-305 V / 50-60 Hz                          |
| Power Factor            | >0,95  |
| Light Color             | 4000 Kelvin                                  |
| Color Rendering Index   | >70  |
| Beam Angle              | 40° x 110°                                   |
| Lifetime                | 50000 h                                      |
| Environment Temperature | -40°C / +50°C                                |
| Material                | Aluminium white/PC clear                     |
| Product Dimensions      | 1170 x 340 x 49 mm                           |
| Product Weight          | 7000 g                                       |
| Certificates            | CE, RoHs                                     |
| Safety Type             | IP40   |
| PCS/Package             | 1  |
| Packaging Size          | 1210 x 390 x 120 mm                          |
| Weight/Packaging        | 9000 g                                       |