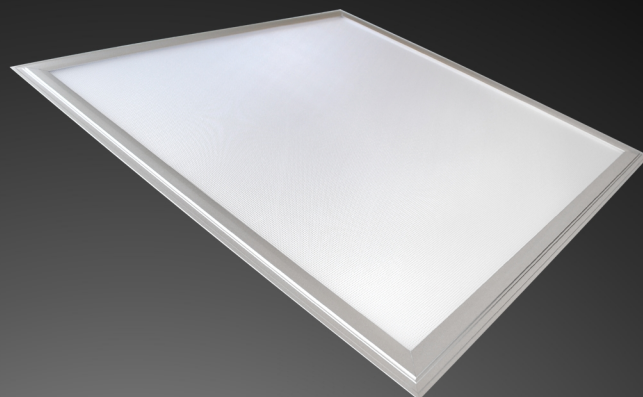


### LED Panels SL

Magnolux LED Panels of SL Series with their improved luminance are the most efficient and environmentally friendly alternative to traditional ceiling grid lights.



## LED Panel SL - Q55-4000-SS-PRO-MP

### HIGHLIGHTS

- » available with motion sensor, light sensor and emergency mode for 3 hours
- » dimming with DALI system and with RGB lighting available
- » various frame designs and panel dimensions
- » microprismatic diffusor optional

### APPLICATION AREA

Offices, Schools, Hotels, Banks, Hospitals, Restaurants, Shops, Public Buildings, Entrance Halls, Corridors, etc.



# SPECIFICATIONS

|                         |   |
|-------------------------|---|
| <b>Artikel Number</b>   | <b>101405</b>                           |
| <b>Product Name</b>     | <b>LED Panel SL</b>                     |
| <b>Model</b>            | <b>Q55-4000-SS-PRO-MP</b>               |
| Product Code            | PRO                                     |
| Lumen Output            | 4200 Lumen                              |
| LED Power               | 50 Watt                                 |
| Power Consumption       | 55 Watt                                 |
| Input Voltage/Hertz     | 220-240 V / 50-60 Hz                    |
| Power Factor            | >0,93                                   |
| Light Color             | 4000 Kelvin                             |
| Color Rendering Index   | >80                                     |
| LED Type                | SMD                                     |
| Beam Angle              | 120°                                    |
| Lifetime                | 50000 h                                 |
| Environment Temperature | -40°C / +40°C                           |
| Material                | Alu Step Frame silver/PC microprismatic |
| Product Dimensions      | 620 x 620 x 12 mm                       |
| Product Weight          | 4000 g                                  |
| Certificates            | CE                                      |
| Safety Type             | IP40                                    |
| PCS/Package             | 1                                       |
| Packaging Size          | 750 x 750 x 30 mm                       |
| Weight/Packaging        | 6000 g                                  |
| Product Info            | ceiling cut-out 605 x 605 mm            |