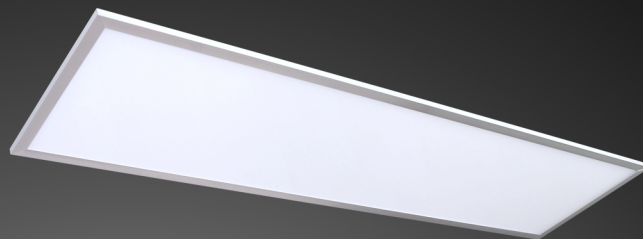


### LED Panels SL

Magnolux LED Panels of SL Series with their improved luminance are the most efficient and environmentally friendly alternative to traditional ceiling grid lights.



## LED Panel SL - L70-4000-FS-PRO

### HIGHLIGHTS

- » available with motion sensor, light sensor and emergency mode for 3 hours
- » dimming with DALI system and with RGB lighting available
- » various frame designs and panel dimensions
- » microprismatic diffusor optional

### APPLICATION AREA

Offices, Schools, Hotels, Banks, Hospitals, Restaurants, Shops, Public Buildings, Entrance Halls, Corridors, etc.

## SPECIFICATIONS

<b>Artikel Number</b>	<b>101406</b>
<b>Product Name</b>	<b>LED Panel SL</b>
<b>Model</b>	<b>L70-4000-FS-PRO</b>
Procukt Code	PRO
Lumen Output	4700 Lumen
Power Consumption	70 Watt
Input Voltage/Hertz	220-240 V / 50-60 Hz
Power Factor	>0,93
Light Color	4000 Kelvin
Color Rendering Index	>80
LED Type	SMD
Beam Angle	120°
Lifetime	50000 h
Environment Temperature	-40°C / +40°C
Material	Alu Flat Frame silver/PC
Product Dimensions	595 x 1195 x 12 mm
Certificates	CE
Safety Type	IP40
PCS/Package	1
Product Info	recessed version

