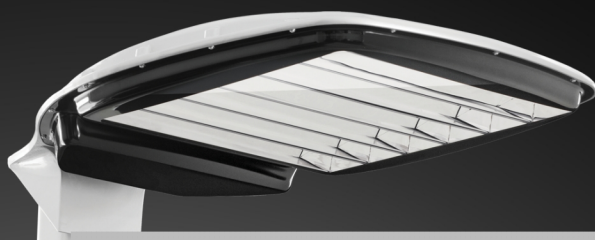


# GRAH<sup>®</sup>

LED LIGHTING



## LED Street Lighting LSL - LSL90 I107-4000

### HIGHLIGHTS

- » asymmetric distribution of luminosity for optimal lighting
- » optimized heat dissipation extends life time
- » multi layer protection of casing for excellent durability
- » dimming (1-10V) optional

### APPLICATION AREA

Urban Traffic Roads, Collector Roads, Junctions, Parking Lots, more demanding Industrial Buildings



## SPECIFICATIONS

<b>Artikel Number</b>	<b>100015</b>
<b>Product Name</b>	<b>LED Street Lighting LSL</b>
<b>Model</b>	<b>LSL90 I107-4000</b>
Lumen Output	12900 Lumen
Power Consumption	107 Watt
Input Voltage/Hertz	110-250 V / 50-60 Hz
Light Color	4000 Kelvin
Dimming	light reduction 50%
Lifetime	60000 h
Environment Temperature	-30°C / +60°C
Operating Temperature	+55°C
Material	Alu-Die-Casting RAL9006/PMMA
Product Dimensions	720 x 465 x 139 mm
Product Weight	7000 g
Certificates	CE, RoHS
Safety Class	I
Safety Type	IP66
Shock Resistance	IK08
Product Info	AA optics asymmetric, excl. pole connection part