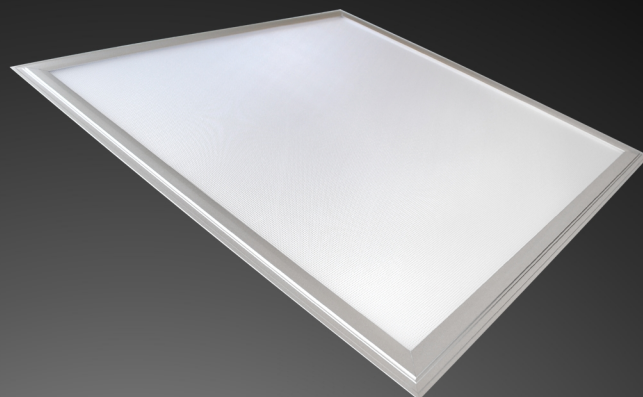


LED Panels SL

Magnolux LED Panels of SL Series with their improved luminance are the most efficient and environmentally friendly alternative to traditional ceiling grid lights.



LED Panel SL - Q55-4000-SS-MP

HIGHLIGHTS

- » available with motion sensor, light sensor and emergency mode for 3 hours
- » dimming with DALI system and with RGB lighting available
- » various frame designs and panel dimensions
- » microprismatic diffuser optional

APPLICATION AREA

Offices, Schools, Hotels, Banks, Hospitals, Restaurants, Shops, Public Buildings, Entrance Halls, Corridors, etc.



SPECIFICATIONS

Artikel Number	101710
Product Name	LED Panel SL
Model	Q55-4000-SS-MP
Lumen Output	3800 Lumen
LED Power	50 Watt
Power Consumption	55 Watt
Input Voltage/Hertz	220-240 V / 50-60 Hz
Light Color	4000 Kelvin
Color Rendering Index	>80
LED Type	SMD
Beam Angle	120°
Lifetime	50000 h
Environment Temperature	-40°C / +40°C
Material	Alu Step Frame silver/PC microprismatic
Product Dimensions	620 x 620 x 9 mm
Product Weight	4000 g
Certificates	CE
Safety Type	IP40
PCS/Package	1
Packaging Size	750 x 750 x 30 mm
Weight/Packaging	6000 g
Product Info	ceiling cut-out 605 x 605 mm