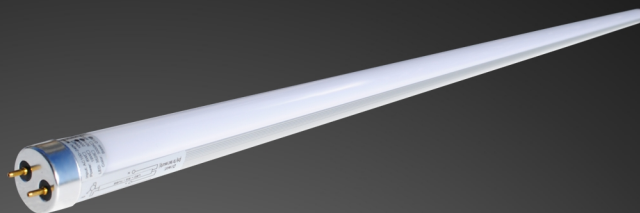


### LED T8 Tubes CL

Magnolux LED T8 Tubes are compatible with both, magnetic and electronic ballasts, and are the most efficient and environmentally friendly alternative to traditional fluorescent tubes.



## LED T8 Tube CL - EM10-600

### HIGHLIGHTS

- » high energy efficiency
- » lifetime up to 25.000 hours
- » EM and CEM-models are compatibel with magnetic and electric ballast

### APPLICATION AREA

Offices, Hotels, Supermarkets, Warehouses, Commercial and Industrial Buildings, Airports, Schools, Hospitals, Parking Decks, etc.



# SPECIFICATIONS

|                         |  |
|-------------------------|--|
| <b>Artikel Number</b>   | <b>101367</b>  |
| <b>Product Name</b>     | <b>LED T8 Tube CL</b>  |
| <b>Model</b>            | <b>EM10-600</b>  |
| Socket                  | G13 - 26mm   |
| Lumen Output            | 850 Lumen  |
| Power Consumption       | 10 Watt  |
| Input Voltage/Hertz     | 85-265 V / 50-60 Hz  |
| Power Factor            | >0,95  |
| Light Color             | 4000 Kelvin  |
| Color Rendering Index   | >80  |
| LED Type                | SMD  |
| Beam Angle              | 120°   |
| Lifetime                | 25000 h  |
| Environment Temperature | -10°C / +40°C  |
| Material                | Alu silver/PC milky  |
| Product Dimensions      | Ø 26mm, L 600 mm   |
| Certificates            | CE, RoHs, EN62471  |
| PCS/Package             | 50   |
| Packaging Size          | 632 x 420 x 220 mm   |
| Weight/Packaging        | 25000 g  |
| Product Info            | compatible with magnetic/electronic ballast, use max. 2 tubes on one ballast |