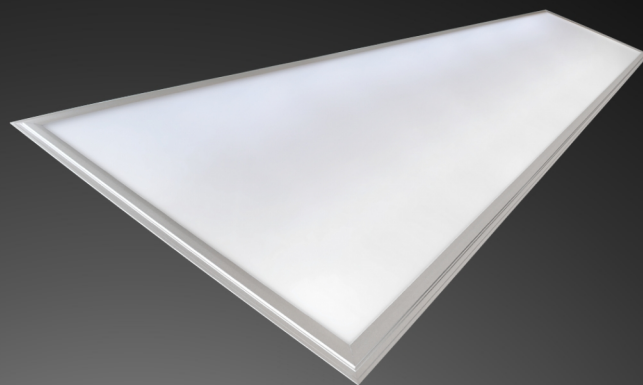


LED Panels SL

Magnolux LED Panels of SL Series with their improved luminance are the most efficient and environmentally friendly alternative to traditional ceiling grid lights.



LED Panel SL - L50-4000-SS

HIGHLIGHTS

- » available with motion sensor, light sensor and emergency mode for 3 hours
- » dimming with DALI system and with RGB lighting available
- » various frame designs and panel dimensions
- » microprismatic diffuser optional

APPLICATION AREA

Offices, Schools, Hotels, Banks, Hospitals, Restaurants, Shops, Public Buildings, Entrance Halls, Corridors, etc.

SPECIFICATIONS

Artikel Number	101690
Product Name	LED Panel SL
Model	L50-4000-SS
Lumen Output	2800 Lumen
LED Power	45 Watt
Power Consumption	50 Watt
Input Voltage/Hertz	220-240 V / 50-60 Hz
Light Color	4000 Kelvin
Color Rendering Index	>80
LED Type	SMD
Beam Angle	120°
Lifetime	50000 h
Environment Temperature	-40°C / +40°C
Material	Alu Step Frame silver/PC
Product Dimensions	320 x 1220 x 9 mm
Certificates	CE
Safety Type	IP40
PCS/Package	1
Packaging Size	1345 x 400 x 44 mm
Product Info	mounted version, ceiling cut-out 305 x 1205 mm

